

GPX8 Polyclonal Antibody
Purified Rabbit Polyclonal Antibody (Pab)
Catalog # AP56208

Specification

GPX8 Polyclonal Antibody - Product Information

Application	WB, IHC-P, IHC-F, IF, ICC, E
Primary Accession	Q8TED1
Reactivity	Rat, Pig, Dog, Bovine
Host	Rabbit
Clonality	Polyclonal
Calculated MW	24 KDa
Physical State	Liquid
Immunogen	KLH conjugated synthetic peptide derived from human GPX8
Epitope Specificity	111-209/209
Isotype	IgG
Purity	
affinity purified by Protein A	
Buffer	0.01M TBS (pH7.4) with 1% BSA, 0.02% Proclin300 and 50% Glycerol.
SUBCELLULAR LOCATION	Membrane.
SIMILARITY	Belongs to the glutathione peroxidase family.
Important Note	This product as supplied is intended for research use only, not for use in human, therapeutic or diagnostic applications.

Background Descriptions

Glutathione peroxidase (GPx) enzymes are generally selenium-containing tetrameric glycoproteins that help prevent lipid peroxidation of cell membranes. GPx enzymes reduce lipid hydroperoxides to alcohols, and reduce free hydrogen peroxide to water. GPx members are among the few proteins known in higher vertebrates to contain selenocysteine, which occurs at the active site of glutathione peroxidase and is coded by the nonsense (stop) codon TGA. There are eight GPx homologs (GPx-1-8). GPx-8 (glutathione peroxidase 8), also known as GSHPx-8, is a 209 amino acid single-pass membrane protein. The gene encoding GPx-8 maps to human chromosome 5q11.2 and mouse chromosome 13 D2.2.

GPX8 Polyclonal Antibody - Additional Information

Gene ID 493869

Other Names

Probable glutathione peroxidase 8, GPx-8, GSHPx-8, 1.11.1.9, GPX8

Dilution

WB~~1:1000<br \>IHC-P~~N/A<br \>IHC-F~~N/A<br \><span class

=IF~~1:50~200<br \>ICC~~N/A<br \>E~~N/A

Format

0.01M TBS(pH7.4), 0.09% (W/V) sodium azide and 50% Glyce

Storage

Store at -20 °C for one year. Avoid repeated freeze/thaw cycles. When reconstituted in sterile pH 7.4 0.01M PBS or diluent of antibody the antibody is stable for at least two weeks at 2-4 °C.

GPX8 Polyclonal Antibody - Protein Information

Name GPX8

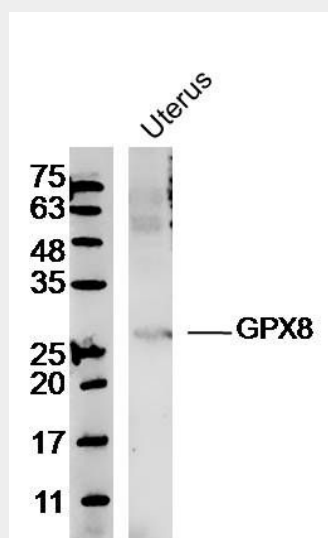
Cellular Location

Membrane; Single-pass membrane protein

GPX8 Polyclonal Antibody - Protocols

Provided below are standard protocols that you may find useful for product applications.

- [Western Blot](#)
- [Blocking Peptides](#)
- [Dot Blot](#)
- [Immunohistochemistry](#)
- [Immunofluorescence](#)
- [Immunoprecipitation](#)
- [Flow Cytometry](#)
- [Cell Culture](#)

GPX8 Polyclonal Antibody - Images

Sample: Uterus (Mouse) Lysate at 40 ug
Primary: Anti-GPX8 (bs-16303R) at 1/300 dilution
Secondary: IRDye800CW Goat Anti-Rabbit IgG at 1/20000 dilution

Predicted band size: 24 kD
Observed band size: 26 kD